

Control of the establishment of aversive memory by calcineurin and Zif268

Karsten Baumgärtel¹, David Genoux^{1,3}, Hans Welzl², Ry Y Tweedie-Cullen¹, Kyoko Koshibu^{1,3}, Magdalena Livingstone-Zatchej¹, Céline Mamie¹ & Isabelle M Mansuy¹

Emotional memory is a rapidly acquired and persistent form of memory, and its robustness is in part determined by the initial strength of the memory. Here, we provide new evidence that the protein phosphatase calcineurin (CaN), a potent negative regulator of neuronal signaling that is known to constrain learning and memory, critically regulates the establishment of emotional memory through mechanisms involving the immediate early gene *Zif268* (also known as *Egr1*). We found that CaN is inhibited in the amygdala during the establishment of aversive memory, but *Zif268* is activated. Using inducible transgenesis in mice, we further saw that CaN inhibition and *Zif268* overexpression during memory establishment strengthen the memory trace and enhance its resistance to extinction. We found that CaN inhibition correlates with increased *Zif268* expression and that a common pool of proteins is regulated in the amygdala after CaN inhibition and *Zif268* overexpression. Together, these findings reveal a previously unknown mechanism for the control of emotional memory that depends on CaN and *Zif268*.

Our past experiences and our memories of them are major factors that shape our behavior. Among the multiple memory traces of past experiences, the strongest dominate and are recalled first; thus, they determine behavior. Such dominance is particularly notable for negatively charged memory traces that are formed during and after traumatic events. Thus, the recall of strongly aversive or fear memory often leads to inappropriate behaviors, such as inapt avoidance responses or excessive fear¹. Although the mechanisms that control the dominance of emotional traces are not known, it is recognized that the degree of dominance of these traces is determined by their initial strength^{2,3}. Emotional memory is unique in this respect, as it is extremely strong immediately after acquisition, even though it is usually acquired in a single episode. It may therefore recruit specific mechanisms during acquisition that establish a robust trace of the learned information. Identifying the molecules involved in these mechanisms is necessary to better understand emotional memory and its pathologies.

To fulfill these functions, the molecules that control the establishment and the strength of emotional memory need to be rapidly activated and to efficiently recruit signaling pathways required for long-term memory. Another important prerequisite is that molecular constraints that weaken neuronal transmission and downregulate signaling pathways and nuclear transcriptional events need to be relieved^{4,5}. CaN and protein phosphatase 1 (PP1) are such molecular constraints that can strongly suppress learning and memory^{6–8}. In particular, CaN has several properties that make it a good candidate for controlling the establishment of strong forms of memory: it is rapidly

activated on Ca²⁺ influx⁹, it is strategically positioned near ligand-gated^{10,11} and voltage-sensitive ion channels^{12,13} that are critical for signaling initiation, it controls multiple signaling molecules at the membrane^{12,13}, in the cytoplasm¹⁴ and in the nucleus¹⁵, and it has a dominant suppressor function over protein kinases¹². Moreover, CaN is an important regulator of transcription factors¹⁶ and nuclear events involved in the control of transcriptional processes, which are both regulated by phosphorylation-dependent processes¹⁷.

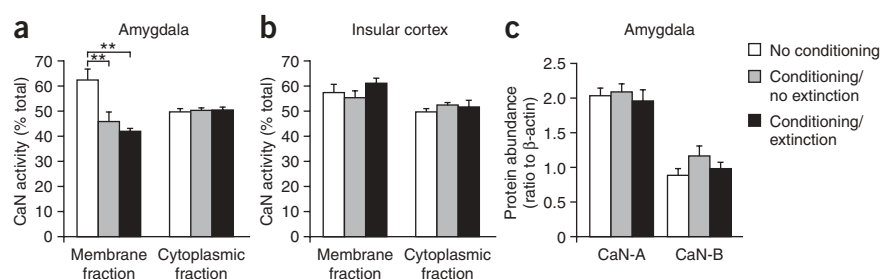
In this study, we show that CaN controls the establishment and the persistence of emotional memory and recruits mechanisms that involve the transcription factor *Zif268* (*Egr-1*, *NGFI-A*). We found that the proper establishment of aversive memory is associated with the inhibition of endogenous CaN and increased *Zif268* expression in the amygdala. Using inducible transgenesis in mice, we show that decreasing or increasing CaN activity during the establishment of memory is sufficient to strengthen or weaken memory, respectively, and that this determines the course of memory extinction without affecting the mechanisms of extinction *per se*. Furthermore, we demonstrate that CaN inhibition is associated with increased *Zif268* expression in the amygdala and that mimicking *Zif268* overexpression in transgenic mice also strengthens memory. Consistent with a link between CaN and *Zif268*, we found a common pool of regulated proteins in the amygdala after CaN inhibition and *Zif268* overexpression. Together, these results provide new evidence for the existence of CaN-dependent mechanisms engaging *Zif268* that act specifically during memory establishment to determine memory strength.

¹Brain Research Institute, Medical Faculty of the University of Zürich and Department of Biology, Swiss Federal Institute of Technology, Winterthurerstrasse 190, 8057 Zürich, Switzerland. ²Division of Neuroanatomy and Behavior, Institute of Anatomy, University of Zürich, Winterthurerstrasse 190, 8057 Zürich, Switzerland. ³Present addresses: Department of Physiology, Faculty of Medical and Health Sciences, University of Auckland, 85 Park Road, Auckland, New Zealand (D.G.) and The Queensland Brain Institute, University of Queensland, St. Lucia, Brisbane 4072, Australia (K.K.). Correspondence should be addressed to I.M.M. (mansuy@hifo.uzh.ch).

Received 12 December 2007; accepted 24 March 2008; published online 20 April 2008; doi:10.1038/nn.2113

Figure 1 CaN activity is decreased in the amygdala by conditioning in the CTA test.

(a) Relative CaN activity (percent of total Ser/Thr protein phosphatase activity) in membrane and cytoplasmic fractions of the amygdala 3 d after conditioning followed by extinction (conditioning/extinction, $n = 8$, black bars) or not (conditioning/no extinction, $n = 8$, gray bars). CaN activity was significantly reduced only in the membrane fraction ($F_{2,21} = 10.59$, $P = 0.0007$) in conditioned animals whether they were subjected to extinction training ($42 \pm 1\%$, Fischer's PLSD, $P = 0.0003$) or not ($46 \pm 4\%$, Fischer's PLSD, $P = 0.0021$; no conditioning, $62 \pm 4\%$, $n = 8$, white bars). **(b)** Data for insular cortex, presented as in **a**. CaN activity was not altered by conditioning or extinction training in membrane (conditioning/extinction, $61 \pm 2\%$; conditioning/no extinction, $55 \pm 3\%$; no conditioning, $57 \pm 3\%$; $F_{2,21} = 1.09$, $P = 0.3533$) or cytoplasmic fractions (conditioning/extinction, $51 \pm 3\%$; conditioning/no extinction, $52 \pm 1\%$; no conditioning, $50 \pm 1\%$; $F_{2,21} = 0.50$, $P = 0.6131$). **(c)** Quantification of CaN-A and CaN-B subunits in the membrane fraction in amygdala. Total CaN-A (conditioning/extinction, $2.0 \pm 0.2\%$; conditioning/no extinction, $2.1 \pm 0.1\%$; no conditioning, $2.0 \pm 0.1\%$; $F_{2,21} = 0.25$, $P = 0.7814$) or CaN-B (conditioning/extinction, $0.9 \pm 0.1\%$; conditioning/no extinction, $1.4 \pm 0.3\%$; no conditioning, $1.2 \pm 0.2\%$; $F_{2,20} = 1.44$, $P = 0.2609$) protein was not changed by conditioning with or without extinction training.



RESULTS

CaN is inhibited and *Zif268* activated in CTA establishment

To investigate the mechanisms that determine the strength and persistence of emotional memory, we used conditioned taste aversion (CTA) in mice. CTA is a form of aversive memory acquired in one trial by association of a novel and appetitive taste (conditioned stimulus, saccharin solution) with visceral malaise (unconditioned stimulus, intraperitoneal injection of LiCl). After acquisition, the association between the conditioned and unconditioned stimuli induces a strong avoidance to saccharin, which persists for several months (Supplementary Fig. 1 online) or years in mammals^{18,19}. The aversive memory trace can, however, be extinguished by the relearning of a new nonaversive trace through repeated exposure to saccharin that is no longer paired with malaise (conditioned stimulus without the unconditioned stimulus)^{18,19}. The nonaversive trace is more difficult to acquire because it is weaker by nature, and it is strongly dominated by the aversive trace³. It can, nonetheless, be progressively reinforced during extinction training and gain sufficient strength to dominate the aversive trace. The respective degree of dominance of each memory trace during testing determines the animal's behavior toward saccharin and ranges from strong aversion to marked preference³.

To examine the involvement of CaN in the establishment of aversive memory, we subjected C57BL/6J wild-type mice to conditioning and then extinction training in the CTA task and measured CaN activity and protein levels in the amygdala and insular cortex, two brain areas that are involved in CTA^{20,21}. CaN activity was significantly reduced by conditioning selectively in the amygdala (-26% ; Fig. 1a) but not in the insular cortex (Fig. 1b). The decrease in CaN activity was specific to the membrane fraction, where CaN is most abundant through binding to anchoring proteins²², and was not seen in the cytoplasmic fraction (Fig. 1a). CaN activity was not further diminished by extinction training (Fig. 1a). The decrease in CaN activity did not result from reduced CaN expression, as CaN catalytic A (CaN-A, α and β isoforms) or regulatory B (CaN-B) subunits were similarly abundant with or without conditioning or extinction training (Fig. 1c). The effect of conditioning was specific to CaN and did not involve PP1 (Supplementary Fig. 2 online), another Ser/Thr protein phosphatase that is partly regulated by CaN (for a review, see refs. 8,23). PP1 activity was not regulated in the amygdala or in the insular cortex (Supplementary Fig. 2).

We next examined whether transcriptional changes occur during CTA establishment and looked at the expression of the transcription factors *Zif268* and *c-Fos* in the amygdala and the insular cortex. *Zif268* and *Fos* are immediate early genes (IEGs) that are rapidly activated by neuronal activity and are known to be involved in associative memory^{24–26}. *Zif268* expression was selectively increased by conditioning in the amygdala ($+50\%$; Fig. 2a), but not in insular cortex (Fig. 2b). This increase was specific to *Zif268* and not seen for *Fos* (Fig. 2a,b). This data therefore indicates that CaN activity is inhibited and *Zif268* mRNA is increased in the amygdala by the establishment of aversive memory.

CaN activity determines memory strength and persistence

To confirm the functional significance of CaN inhibition in aversive memory, we experimentally decreased or increased CaN activity inducibly and selectively in forebrain neurons by expression of an autoinhibitory domain of CaN²⁷ or an active form of CaN- α ²⁸ in transgenic mice using the reverse tetracycline-controlled transactivator (rtTA or rtTA2)^{28,29}. CaN inhibition (-35 – 45%)²⁷ or overactivation ($+50$ – 75%)²⁸ in adult forebrain neurons did not alter the animals'

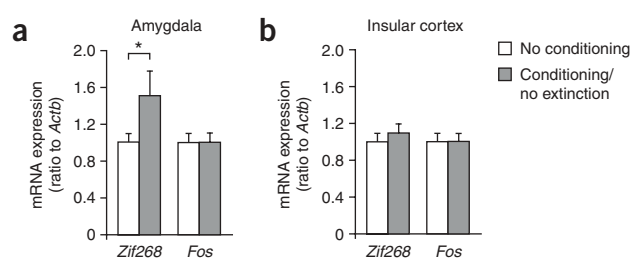


Figure 2 *Zif268* mRNA expression is increased by CTA in the amygdala. **(a)** *Zif268* expression in the amygdala 3 d after conditioning. *Zif268* mRNA expression was significantly increased ($F_{1,14} = 5.66$, $P = 0.0321$) after conditioning (conditioning/no extinction, 1.5 ± 0.3 , $n = 6$, gray bars; no conditioning, 1.0 ± 0.1 , $n = 10$, white bars), whereas *Fos* mRNA expression was not changed (conditioning/no extinction, 1.0 ± 0.1 , $n = 6$; no conditioning, 1.0 ± 0.1 , $n = 9$; $F_{1,13} = 0.02$, $P = 0.8984$). **(b)** Data for insular cortex, presented as in **a**. *Zif268* (conditioning/no extinction, 1.1 ± 0.1 , $n = 6$; no conditioning, 1.0 ± 0.1 , $n = 10$; $F_{1,14} = 1.57$, $P = 0.2313$) and *Fos* (conditioning/no extinction, 1.0 ± 0.1 , $n = 6$; no conditioning, 1.0 ± 0.1 , $n = 10$; $F_{1,14} = 0.21$, $P = 0.6543$) mRNA expression was not altered after CTA conditioning.

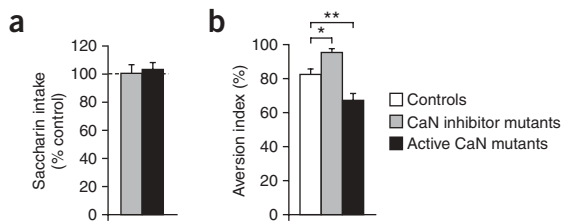


Figure 3 Aversive memory is enhanced by CaN inhibition and weakened by CaN overactivation. **(a)** Natural preference for saccharin was not altered ($F_{1,29} = 0.14$, $P = 0.7140$) by CaN inhibition or overactivation, as shown by a similar ratio of saccharin intake relative to controls in mutants expressing a CaN inhibitor ($100 \pm 6\%$, $n = 15$, gray bars; controls, $n = 14$) or an active CaN ($103 \pm 5\%$, $n = 16$, black bars; controls, $n = 21$) averaged over several daily presentations of water and saccharin. **(b)** Aversion to saccharin (aversion index defined as volume of water intake over total liquid intake) was significantly ($F_{2,53} = 11.20$, $P < 0.0001$) higher in mutants expressing a CaN inhibitor ($93 \pm 3\%$, $n = 6$; Fisher's PLSD, $P = 0.0440$) and lower in mutants expressing an active CaN ($68 \pm 4\%$, $n = 18$; Fisher's PLSD, $P = 0.0008$) than in controls ($82 \pm 2\%$, pooled, $n = 31$) 2 d after conditioning.

natural preference for saccharin (Fig. 3a). When tested for their memory of the conditioned and unconditioned stimuli association, mutants and controls from both transgenic lines strongly avoided saccharin; in the mutants, however, avoidance was increased or decreased depending on whether CaN was inhibited or overactivated, respectively (Fig. 3b). Thus, aversion to saccharin was significantly increased by CaN inhibition, whereas it was reduced by CaN overactivation, indicating that the level of CaN activity at the time of aversive memory establishment modulates the strength of memory.

We next examined whether the resistance of aversive memory to extinction is also altered by a change in CaN activity. For this, we repeatedly exposed conditioned mice to saccharin and water in daily trials to induce extinction, and their aversion to saccharin was measured across time. Although extinction training resulted in a gradual decline in aversion to saccharin in controls, it induced no decline in mutants expressing a CaN inhibitor (Fig. 4a). In these mutants, the memory of the aversive association was significantly more persistent than in controls and continued to dominate behavior and to induce a strong aversion to saccharin (Fig. 4a). This effect of phosphatase inhibition was specific to CaN, as inhibition of PP1 in adult forebrain (-45 – 65%) during and after conditioning did not alter the

establishment nor the extinction of CTA (Supplementary Fig. 3 online). This lack of effect of PP1 inhibition is consistent with the finding that PP1 activity is not regulated during the establishment of aversive memory.

To examine the persistence of the effect of CaN inhibition on the dominance of the aversive trace, we stopped training for several weeks and then resumed. After this delay, aversion to saccharin was still dominant in mutants expressing a CaN inhibitor, whereas it was partly extinguished in controls (Fig. 4a), consistent with the hypothesis that the initial memory trace is most aversive in the mutants. However, following an additional 2 d of extinction training, CTA rapidly extinguished in the mutants and was similar to CTA in controls (Fig. 4a), indicating that CaN inhibition did not permanently block extinction training, but rather shifted memory dominance in favor of the aversive trace.

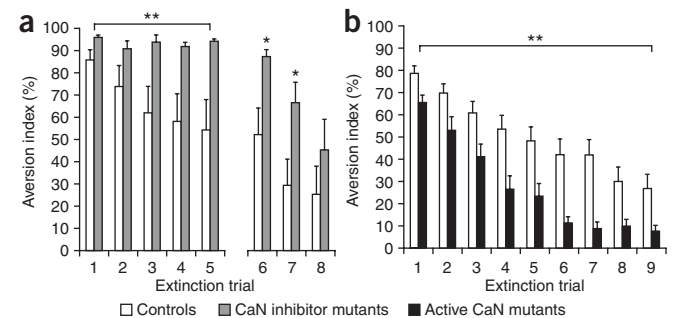
Consistent with these findings, CaN overactivation made memory for the aversive association weaker and less persistent than in controls (Fig. 4b and Supplementary Fig. 4 online). In active CaN mutants, extinction was complete after seven extinction trials and saccharin intake was comparable in conditioned ($9 \pm 3\%$) and naive ($2 \pm 1\%$, $F_{1,20} = 2.44$, $P = 0.1339$, data not shown) mutants.

Notably, a change in CaN activity not only affected aversive memory, but also modulated fear memory, another form of associative memory³⁰. CaN inhibition increased the resistance to extinction of memory for a paired tone footshock, whereas CaN overactivation decreased it (Supplementary Fig. 5 online). These results suggest that CaN is a general regulator of associative forms of memory.

If CaN has a general function in memory formation, we would expect it to modulate not only the aversive trace, but also the nonaversive trace acquired during extinction training. To test this hypothesis, we examined whether extinction itself is altered by CaN inhibition or overactivation. We took advantage of the inducibility of transgene expression and induced CaN inhibition or overactivation only after conditioning. In the absence of transgene expression during conditioning, aversion to saccharin was similar between mutants and controls (Fig. 5a,b), indicating a comparable level of learning. Furthermore, the induction of transgene expression after conditioning did not alter extinction of the aversive trace, as shown by a similar decline in aversion in mutants expressing either a CaN inhibitor or an active CaN and in controls (Fig. 5a,b). These results are consistent with the observation that CaN activity is not altered by extinction training in wild-type mice and suggest that the process of extinction *per se* is not regulated by CaN.

Figure 4 CaN inhibition or overactivation modulate CTA during extinction.

(a) Extinction of CTA in mutant mice expressing a CaN inhibitor. During the first five extinction trials, aversion to saccharin remained high in CaN inhibitor mutants ($2 \pm 2\%$ decline in five trials, $n = 6$, gray bars; ANOVA, trial 1 versus trial 5, $F_{1,10} = 1.06$, $P = 0.3272$), whereas aversion gradually declined in controls ($42 \pm 14\%$ decline in five trials, $n = 9$, white bars; ANOVA, trial 1 versus trial 5, $F_{1,16} = 4.66$, $P = 0.0464$; ANOVA, main effect of genotype on decline, $F_{1,13} = 5.3$, $P = 0.0385$; ** repeated measures ANOVA, trial by genotype interaction, $F_{4,52} = 4.34$, $P = 0.0042$). Aversion was prominent in mutants after five extinction trials ($94 \pm 1\%$; controls, $54 \pm 14\%$; $F_{1,13} = 5.32$, $P = 0.0382$) and after 1 month (extinction trial 6, $87 \pm 4\%$; controls, $52 \pm 12\%$; $F_{1,13} = 5.28$, $P = 0.0387$), but was rapidly extinguished following two additional extinction trials ($51 \pm 16\%$ decline in three trials; repeated measures ANOVA, main effect of trial, $F_{2,10} = 9.68$, $P = 0.0046$) to levels comparable ($F_{1,13} = 0.99$, $P = 0.3377$) to controls (extinction trial 8; mutants, $45 \pm 16\%$; controls, $25 \pm 13\%$). **(b)** Extinction of CTA in mutant mice expressing active CaN. CaN overactivation in mutants resulted in a lower initial aversion index (mutants, $66 \pm 3\%$, $n = 16$, black bars; controls, $79 \pm 3\%$, $n = 21$, white bars; $F_{1,35} = 7.91$, $P = 0.0080$) and a faster return (* main effect of genotype, $F_{1,35} = 13.41$, $P = 0.0008$) to baseline than in controls.



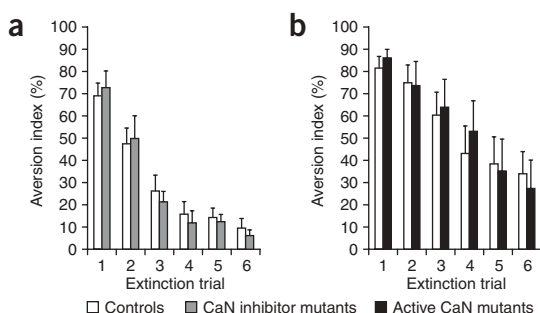


Figure 5 CaN inhibition or overactivation after conditioning does not alter CTA extinction. (**a,b**) Transgene induction after conditioning in mutant mice expressing a CaN inhibitor (**a**) did not alter CTA in the first extinction trial (mutants, $73 \pm 7\%$, $n = 8$, gray bars; controls, $69 \pm 6\%$, $n = 16$, white bars; $F_{1,22} = 0.14$, $P = 0.7086$) or extinction (decline in six trials: mutants, $91 \pm 3\%$; controls, $84 \pm 7\%$; $F_{1,22} = 0.52$, $P = 0.4786$; repeated measures ANOVA, trial by genotype interaction, $F_{5,110} = 0.31$, $P = 0.9067$), and in mutant mice expressing an active CaN (**b**) did not alter CTA in the first extinction trial (mutants, $87 \pm 4\%$, $n = 6$, black bars; controls, $82 \pm 5\%$, $n = 11$, white bars; $F_{1,15} = 0.37$, $P = 0.5519$) or extinction (decline in six trials: mutants, $56 \pm 13\%$; controls, $44 \pm 10\%$; $F_{1,15} = 0.58$, $P = 0.4582$; repeated measures ANOVA, trial by genotype interaction, $F_{5,75} = 0.44$, $P = 0.8224$).

CaN activity and *Zif268* expression are functionally linked

Because CaN inhibition and increased *Zif268* expression correlate during the establishment of aversive memory, we examined whether these processes are coupled. For this, we quantified *Zif268* mRNA expression in the amygdala and insular cortex in CaN inhibitor mutants. Expression of the transgene encoding a CaN inhibitor (**Fig. 6a**) significantly increased *Zif268* mRNA in both the amygdala (80%) and insular cortex (50%) ($P = 0.0477$ and $P = 0.0036$, respectively; **Fig. 6b**). The apparent lower increase in *Zif268* mRNA in the insular cortex most likely resulted from the fact that *Zif268* mRNA is already highly expressed in the insular cortex (about five-fold higher than in amygdala; **Supplementary Fig. 6** online). In the amygdala, the effect of CaN inhibition was specific to *Zif268*, as *Fos* expression was not changed (CaN inhibitor mutants, 1.2 ± 0.1 ; controls, 1.0 ± 0.1 ; $F_{1,16} = 0.90$; $P = 0.3575$, data not shown). These results suggest a functional link between CaN activity and *Zif268* expression and the possibility that CaN inhibition strengthens aversive memory by regulating *Zif268*.

To test this hypothesis, we overexpressed *Zif268* in the mouse forebrain using an inducible *Zif268* transgene (**Fig. 7a**). In the resulting mutant mice, *Zif268* mRNA expression was increased in the amygdala, but not in the cerebellum (**Fig. 7b**). When tested for CTA, *Zif268* mutants avoided saccharin similarly to controls after conditioning; however, they showed a significantly more persistent CTA during extinction training ($P = 0.0160$; **Fig. 7c**). *Zif268* mutants showed a significantly slower aversion decline than controls after five daily extinction trials ($P = 0.0168$; **Fig. 7c**). To further examine the persistence of the effect of *Zif268* overexpression on aversive memory, training was stopped for several weeks and then resumed. After this delay, aversion was still more pronounced in *Zif268* mutants than in controls (**Fig. 7c**). However, following an additional 3 d of extinction training, aversive memory was fully extinguished in *Zif268* mutants and was similar to that seen in controls (**Fig. 7c**). The persistence of aversion may be explained by a stronger aversive memory that dominates behavior during extinction training or by slower acquisition of the nonaversive trace during extinction training. To distinguish between these possibilities, we examined whether extinction itself is altered by *Zif268*

overexpression by inducing transgene expression only after conditioning. In the absence of *Zif268* expression during conditioning, aversion to saccharin was comparable in *Zif268* mutants and controls (**Fig. 7d**). Similarly, repeated extinction trials resulted in a comparable decline in aversion in *Zif268* mutants and controls, indicating that *Zif268* overexpression does not affect extinction *per se*. These results suggest that, like CaN, *Zif268* determines memory strength during CTA establishment but is not involved in extinction. These findings corroborate the suggestion that *Zif268* is a downstream effector of CaN-dependent pathways for the regulation of memory strength.

To confirm this suggestion, we examined whether CaN inhibition and *Zif268* overexpression modulate similar targets in the amygdala. We used a comprehensive proteomic approach to identify and quantify proteins in CaN inhibitor and *Zif268* mutant mice. As anticipated, the profile of regulated functional groups was comparable in the mutant lines (**Supplementary Fig. 7** online), and among the proteins that were found to be differentially expressed in the amygdala, 14 were coregulated in both lines (**Supplementary Fig. 8** online). These results therefore suggest that CaN and *Zif268* share common mechanisms for the regulation of memory strength.

DISCUSSION

Our study demonstrates that the establishment of aversive memory is associated with physiological inhibition of CaN selectively in the amygdala and that the level of CaN activity at the time of memory establishment determines the strength of memory. The enhancing or weakening effect of a decrease or an increase in CaN activity on memory strength highlights a bidirectional role for CaN in the mechanisms of memory establishment and underscores the importance of a tight fine-tuning of CaN activity during learning. This key function may be derived from the strategic positioning of CaN in the postsynaptic density, close to neurotransmitter receptors and ion channels, and upstream of major signaling cascades. This positioning allows for the rapid capture of incoming signals, efficient shaping of signal initiation and activation of downstream signaling cascades^{11,31} (**Supplementary Fig. 9** online). In these cascades, CaN may act on various processes. It may apply a molecular constraint on Ca^{2+} influx and neuronal excitability by controlling the activity of L-type voltage-gated Ca^{2+} channels¹² and maintaining the AMPA receptor in a dephosphorylated state to prevent its trafficking¹³. It can also limit cyclic AMP (cAMP) signaling and cAMP-dependent protein kinase

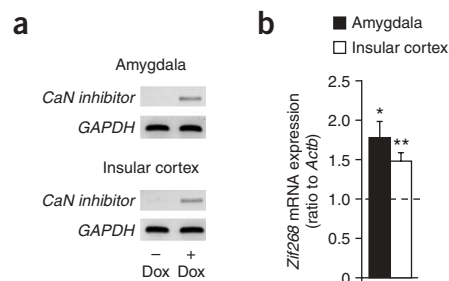


Figure 6 *Zif268* mRNA expression is increased by CaN inhibition in the amygdala. (**a**) *CaN inhibitor* transgene mRNA was detected in amygdala and insular cortex in mutants, but not in controls. *GAPDH* mRNA indicates equal cDNA loading and quality. (**b**) Increased relative expression of *Zif268* mRNA in the amygdala (mutants, 1.8 ± 0.4 , $n = 9$, black bar; controls, 1.0 ± 0.2 , $n = 10$; $F_{1,16} = 4.60$, $P = 0.0477$) and insular cortex (mutants, 1.5 ± 0.1 , white bar; controls, 1.0 ± 0.1 ; $F_{1,17} = 11.39$, $P = 0.0036$) in CaN inhibitor mutants compared with controls (represented by dashed line). Dox, doxycycline.

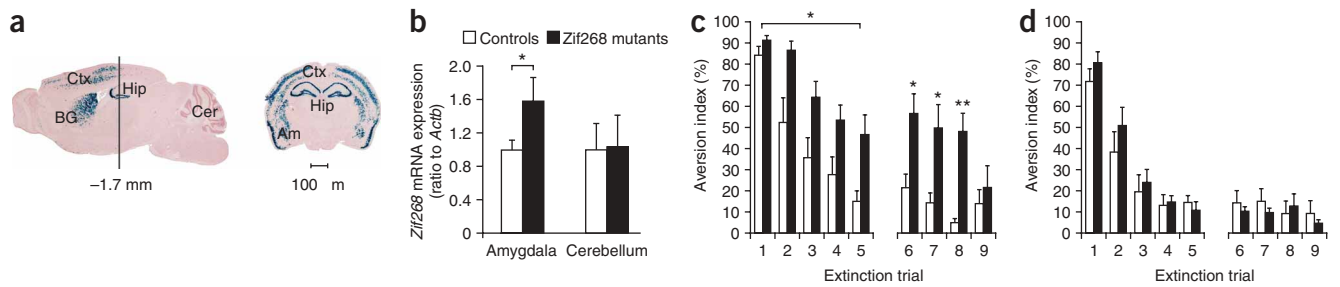


Figure 7 *Zif268* overexpression mimics the effect of CaN inhibition on CTA. (a) In *Zif268* mutants, the *lacZ* reporter gene was specifically expressed in forebrain, including neocortex (Ctx), hippocampus (Hip), amygdala (Am) and basal ganglia (BG), but not cerebellum (Cer), as shown on a parasagittal section and a representative coronal section at bregma -1.7 mm. (b) *Zif268* mRNA expression was significantly increased in *Zif268* mutants in the amygdala (1.6 ± 0.3 , $n = 11$, black bars; controls, 1.0 ± 0.1 , $n = 10$, white bars; $F_{1,19} = 5.41$, $P = 0.0313$), but not in cerebellum (1.0 ± 0.4 ; controls, 1.0 ± 0.3 ; $F_{1,17} = 0.01$, $P = 0.9251$). (c) CTA is more persistent in *Zif268* mutants than in controls (repeated-measures ANOVA, trial by genotype interaction, $F_{8,96} = 2.51$, $P = 0.0160$). Although *Zif268* mutants ($91 \pm 2\%$, $n = 6$) and controls ($84 \pm 4\%$, $n = 8$) avoided saccharin to a similar degree ($F_{1,12} = 1.92$, $P = 0.1913$) when first tested 10 d after conditioning, aversion to saccharin declined much less in *Zif268* mutants (decline in five trials, $49 \pm 10\%$; ANOVA, trial 1 versus trial 5, $F_{1,10} = 21.58$, $P = 0.0009$) than in controls (decline in five trials, $83 \pm 5\%$; ANOVA, trial 1 versus trial 5, $F_{1,14} = 112.18$, $P < 0.0001$; ANOVA, decline by genotype interaction; $F_{1,12} = 10.48$, $P = 0.0071$) during the subsequent four extinction trials. Aversion was still strong in *Zif268* mutants after 2 weeks (extinction trial 6: mutants, $57 \pm 9\%$; controls, $21 \pm 7\%$; $F_{1,12} = 10.39$, $P = 0.0073$), but was fully extinguished (decline in four trials, $68 \pm 10\%$; repeated measures ANOVA, main effect of trial, $F_{3,15} = 5.98$, $P = 0.0069$) after three additional extinction trials (extinction trial 9: mutants, $22 \pm 10\%$; controls, $14 \pm 7\%$; $F_{1,12} = 0.44$, $P = 0.5206$). (d) *Zif268* overexpression after conditioning did not modify CTA extinction. In the first extinction trial, the aversion to saccharin was comparable between *Zif268* mutants ($81 \pm 5\%$, $n = 8$) and controls ($72 \pm 6\%$, $n = 10$; $F_{1,16} = 1.18$, $P = 0.2929$). Extinction training had a similar effect in *Zif268* mutants and controls (repeated measures ANOVA, trial by genotype interaction, $F_{8,128} = 1.48$, $P = 0.1691$) and resulted in a comparable decline (mutants, $94 \pm 2\%$; controls, $88 \pm 6\%$; $F_{1,16} = 0.69$, $P = 0.4172$).

activity by regulating adenylyl cyclases^{32,33}. Furthermore, CaN might weaken signaling to the nucleus by counteracting protein kinases such as Ca²⁺/calmodulin- and mitogen-activated protein kinases (CaMKs/MAPKs)^{34,35}, known to regulate transcription factors such as cAMP-response element-binding protein (CREB), serum response factor and Elk1^{34,36} (Supplementary Fig. 9). Our data demonstrate that CaN regulates transcriptional processes by recruiting mechanisms involving the transcription factor *Zif268*. We found that CaN inhibition is associated with increased *Zif268* expression in the amygdala and that such an increase occurs naturally during the establishment of CTA. Furthermore, mimicking this increase in *Zif268* expression by transgenesis strengthens CTA in a manner similar to CaN inhibition.

The identification of a common pool of proteins that are similarly regulated by CaN inhibition and *Zif268* overexpression in the amygdala points to a functional link between CaN and *Zif268*. It is also possible, however, that CaN acts directly on *Zif268*, as shown for a *Zif268*-related transcription factor in *Saccharomyces*³⁷, and that CaN regulates other transcription factors beyond *Zif268* (refs. 38,39; Supplementary Fig. 9). The mechanisms by which CaN is inhibited during learning have also not been identified but may recruit endogenous inhibitors such as the CaN-binding protein Cabin1/Cain, the calcineurin homolog protein or modulatory calcineurin-interacting proteins, anchoring proteins such as A kinase-anchoring proteins⁴⁰, or redox inactivation⁴¹. The present results point to the importance of a tight fine-tuning of these inhibitory processes for memory, as a complete absence of CaN, such as that induced by genetic knockout, perturbs, rather than improves, memory^{42,43}. Finally, the finding that *Zif268* overexpression enhances memory complements previous data showing that *Zif268* knockout impairs learning and memory^{25,26}. Taken together, these findings reveal that *Zif268*-dependent transcriptional processes control memory processes bidirectionally, further highlighting the vital role of *Zif268* in cognitive functions.

Our results also reveal that the mechanisms responsible for the establishment and extinction of aversive memory are distinct in that they do not share dependence on CaN or *Zif268*. Although the

establishment of CTA involves both, extinction *per se* does not. This result is important for the understanding of the mechanisms of memory formation because it indicates that extinction, although a form of relearning^{18,20}, is mechanistically distinct from initial learning. One of the differences reflects the fact that both CaN inhibition and *Zif268* activation induced by conditioning are persistent and therefore 'lock' CaN and *Zif268* across extinction learning (at least in the amygdala). It should be noted that these mechanisms may be unlocked by recall, as CaN was shown to be activated 1 d after conditioning in the fear-potentiated startle or fear conditioning tasks⁴⁴⁻⁴⁶. Notably in the present study, the distinction between the establishment and the extinction of memory was possible because of the unique properties of CTA. It is acquired in a single trial and therefore has distinct acquisition and establishment phases, which is not the case for incremental learning such as fear conditioning, which usually requires several tone-shock pairings⁴⁷. CTA is also extremely robust and consistent across mice but can, nonetheless, be progressively extinguished in a controlled and quantifiable manner. Finally, CTA is ethologically relevant and mimics natural behaviors.

By revealing that CaN critically gates highly salient forms of associative memory, our results extend previous reports showing that CaN acts as a molecular constraint on nonassociative learning and memory such as spatial working, reference memory or object recognition^{6,27,28,48}. Our results further highlight a notable dissociation between CaN and PP1, where only CaN is involved in associative memory, whereas both CaN and PP1 in the forebrain control the acquisition and formation of nonassociative memory^{7,27}. The present data may provide new perspectives for the development of potential therapeutic treatments against memory disorders, for instance, involving the recall of intrusive memory as in aversive-, fear- or anxiety-associated disorders.

METHODS

Animals. We used adult transgenic mice and control littermates (3–6 months old) and C57BL/6J OlaHsd wild-type mice (3 months old, Harlan) in our

experiments. Mice were maintained in standard conditions under a reversed light cycle (dark phase, 7 a.m. to 7 p.m.). Doxycycline-supplemented food (6 mg per 100 g of wet food, West-Ward Pharmaceuticals) was administered to transgenic mice and control littermates daily at least 6 d before and throughout experimentation. Habituation, conditioning and test sessions were performed during the second and third quarter of the dark phase. All experiments were carried out in accordance with guidelines and regulations of the cantonal veterinary office, Zürich.

Data analyses. The data were analyzed by one-way or repeated-measures ANOVA, followed by Fischer's protected least-significant-difference (PLSD) *post hoc* test to compare individual groups or group effects over time. When the statistical test is not specifically mentioned, a one-way ANOVA was used and the *F* and *P* values refer to the main effect. Data and error bars represent s.e.m. **P* < 0.05, ***P* < 0.005 in all figures.

Generation of Zif268 mutant mice. A 1,744-bp fragment of *Zif268* coding sequence was excised from the vector *pCMVSPORT6-Zif268* by *AvaI/HpaI* digest, blunt-ended using T4 polymerase (New England Biolabs) and inserted into the EcoRV site of *pNN265*. From this, a NotI fragment was excised (3,190 bp) and introduced into the NotI site of *pBI-G* (Clontech). *SalI/AseI* digest resulted in an 8,381-bp fragment that was microinjected into fertilized oocytes with a mixed C57Bl/6J and DBA2 F1 background. Founder mice were backcrossed once to C57Bl/6J mice and their offspring to CaMKII α -rtTA2 mice²⁹ to generate Zif268 mutant mice.

CTA test. Singly housed mice were adapted to restricted drinking (two bottles for 20-min once or twice per day for 4 d), then exposed to saccharin (0.5%) for 20-min on conditioning day, followed 40-min later by LiCl injection (intraperitoneal, 0.14 M, 2% of body weight). Control mice were injected with vehicle. CTA was tested by presentation of one bottle of saccharin and one bottle of water (choice test) 2 d after conditioning for the experiments in **Figures 1–4**, and 10 d after conditioning for all other CTA experiments. CTA extinction was induced by successive daily choice tests. Measurements of endogenous CaN activity and *Zif268* mRNA expression were conducted 40-min after the second extinction trial (that is, 3 d after conditioning).

Cued fear conditioning. Mice were habituated to the room and handled for 2 consecutive d before testing. The mice were placed in a box 1 d after habituation for 4 min and then exposed to three 30-s tones (2,800 Hz) paired with an electric foot shock (0.3 mA) during the last second (30-s inter-tone/shock intervals). Cued memory was tested 1, 4, 7, 10, 13 and 16 d after conditioning by placing the animal for 2 min in a novel box, and playing the tone during the second minute. Freezing was determined in 0.75-s bouts and expressed as percent time of tone presentation. Automated boxes and analysis software were used (FreezeFrame, Coulbourn Instruments).

CaN activity assay. Amygdala and insular cortex were isolated and processed using the BIOMOL Quantizyme Assay Kit (AK-816) with modifications including centrifugations at 16,000g and use of inorganic phosphate–bind resin (Innova Biosciences) for desalting. The first pellet was resuspended in lysis buffer containing 1.2% Nonidet P-40 (vol/vol, Fluka) to obtain a crude membrane fraction. For cytoplasmic and membrane fractions, 0.7 and 1.4 μ g of total protein, respectively (as determined by Bradford assay), were used. PSD95 and integral membrane proteins (GluR1, mGluR5), but no nuclear markers (histone 2A, histone deacetylase 1, Zif268, CREB), were detected by western blotting in this fraction.

Western blotting. Proteins from the preparation for the CaN assay (20 μ g for cytoplasmic, 30 μ g for membrane fraction) were resolved on SDS-PAGE and transferred to a polyvinylidene difluoride membrane. Blocking and antibody dilution were carried out in blocking buffer for near-infrared detection (Rockland). Total CaN protein was revealed using antibody to CaN-A (Abcam, final dilution 1:5,000) or to CaN-B (Upstate, final dilution 1:1,000) followed by IRDye700-conjugated goat antibody to rabbit IgG (Rockland, final dilution 1:5,000) and normalized to β -actin (Upstate, final dilution 1:3,000).

Quantitative RT-PCR. RNA was extracted from amygdala using a Nucleospin RNA II Kit (Macherey-Nagel) followed by DNA digestion (Ambion). RNA

(100 ng) was reverse-transcribed using the SuperScript First Strand Synthesis system (Invitrogen). Quantitative PCR was run on a 7500 real-time PCR system (Applied Biosystems) using TaqMan kits (Applied Biosystems) for *Zif268* (Mm00656724_m1), *Fos* (Mm00487425_m1), *Actb* (4352664-0510003) and *GAPDH* (4352662-0509004). Results were normalized to *Actb* or *GAPDH* and expressed as fold change of average of controls.

RT-PCR. cDNA (1 μ l), as prepared above, was used for amplification using the primers pNN3050 (5'-CGA TTC TAG AAT TCG CTG TCT GCG AGG GCC-3') and 211 (5'-GGC ATC CTC TCG TTA ATT CCG-3'). cDNA quality and loading were verified with the housekeeping gene *GAPDH* using the primers GAPDH F1 (5'-CAC TGA GCA TCT CCC TCA CA-3') and GAPDH R1 (5'-GTG GGT GCA GCG AAC TTT AT-3').

β -galactosidase staining. Parasagittal and coronal brain sections (14 μ m) were processed as described previously²⁹.

Matrix-assisted laser desorption/ionization tandem mass spectrometry analysis of iTRAQ-labeled samples. Amygdala protein fractions were labeled with iTRAQ, fractionated via two-dimensional liquid chromatography as described previously⁴⁹ and analyzed on a 4800 MALDI MS/MS (**Supplementary Methods** online).

Note: Supplementary information is available on the Nature Neuroscience website.

ACKNOWLEDGMENTS

We thank H. Rüssig, F. Helmchen and B. Kampa for advice with statistical analyses, T. Bliss, S. Laroche and D. Kuhl for discussion, P. Gehrig for mass spectrometry analysis, U. Haditsch and L. Spassova for technical help, T. Rülcke and P. Pelzar for egg microinjection, G. Fischer for help with animal maintenance, and R. Schöb for graphical assistance. Mouse *Zif268* cDNA was generously provided by T. Bliss (NMRC, London, UK) and the *pBI-G* vector by H. Bujard (ZMBH, Heidelberg, Germany). This project was funded by the University of Zürich, the Swiss Federal Institute of Technology, the National Center of Competence in Research "Neural Plasticity and Repair", the Swiss National Science Foundation, the Human Frontier Science Program, the Slack-Gyr Foundation and the EMBO Young Investigator Program.

AUTHOR CONTRIBUTIONS

K.B. was responsible for the project and wrote the manuscript together with I.M.M. He conducted all CTA experiments except those presented in **Figure 3a** and **Supplementary Figure 4**, performed all biochemical and molecular experiments, and generated and characterized the *Zif268* mutant mice. H.W. provided the expertise for the behavioral experiments and actively contributed to them. D.G. initiated this project and performed the CTA experiments shown in **Figure 3a** and **Supplementary Figure 4**. R.Y.T.-C. and M.L.-Z. performed the proteomics screen. K.K. was involved in several CTA experiments and in tissue isolation and developed the PP1 assay used to generate **Supplementary Figure 2**. C.M. was involved in one CTA experiment and during several sample preparations. I.M.M. is the principal investigator; she generated the CaN and PP1 transgenic lines, conceived the project, provided continual conceptual input and financial support and wrote the manuscript.

Published online at <http://www.nature.com/natureneuroscience>

Reprints and permissions information is available online at <http://npg.nature.com/reprintsandpermissions>

1. Phelps, E.A. & LeDoux, J.E. Contributions of the amygdala to emotion processing: from animal models to human behavior. *Neuron* **48**, 175–187 (2005).
2. Dudai, Y. Molecular bases of long-term memories: a question of persistence. *Curr. Opin. Neurobiol.* **12**, 211–216 (2002).
3. Eisenberg, M., Kobilov, T., Berman, D.E. & Dudai, Y. Stability of retrieved memory: inverse correlation with trace dominance. *Science* **301**, 1102–1104 (2003).
4. Abel, T., Martin, K.C., Bartsch, D. & Kandel, E.R. Memory suppressor genes: inhibitory constraints on the storage of long-term memory. *Science* **279**, 338–341 (1998).
5. Han, J.H. *et al.* Neuronal competition and selection during memory formation. *Science* **316**, 457–460 (2007).
6. Mansuy, I.M., Mayford, M., Jacob, B., Kandel, E.R. & Bach, M.E. Restricted and regulated overexpression reveals calcineurin as a key component in the transition from short-term to long-term memory. *Cell* **92**, 39–49 (1998).
7. Genoux, D. *et al.* Protein phosphatase 1 is a molecular constraint on learning and memory. *Nature* **418**, 970–975 (2002).
8. Mansuy, I.M. & Shenolikar, S. Protein serine/threonine phosphatases in neuronal plasticity and disorders of learning and memory. *Trends Neurosci.* **29**, 679–686 (2006).

ARTICLES

9. Rusnak, F. & Mertz, P. Calcineurin: form and function. *Physiol. Rev.* **80**, 1483–1521 (2000).
10. Coghlan, V.M. *et al.* Association of protein kinase A and protein phosphatase 2B with a common anchoring protein. *Science* **267**, 108–111 (1995).
11. Yakel, J.L. Calcineurin regulation of synaptic function: from ion channels to transmitter release and gene transcription. *Trends Pharmacol. Sci.* **18**, 124–134 (1997).
12. Oliveria, S.F., Dell'Acqua, M.L. & Sather, W.A. AKAP79/150 anchoring of calcineurin controls neuronal L-type Ca²⁺ channel activity and nuclear signaling. *Neuron* **55**, 261–275 (2007).
13. Smith, K.E., Gibson, E.S. & Dell'Acqua, M.L. cAMP-dependent protein kinase post-synaptic localization regulated by NMDA receptor activation through translocation of an A-kinase anchoring protein scaffold protein. *J. Neurosci.* **26**, 2391–2402 (2006).
14. Winder, D.G. & Sweatt, J.D. Roles of serine/threonine phosphatases in hippocampal synaptic plasticity. *Nat. Rev. Neurosci.* **2**, 461–474 (2001).
15. Kingsbury, T.J., Bambrick, L.L., Roby, C.D. & Krueger, B.K. Calcineurin activity is required for depolarization-induced, CREB-dependent gene transcription in cortical neurons. *J. Neurochem.* **103**, 761–770 (2007).
16. Hogan, P.G. & Li, H. Calcineurin. *Curr. Biol.* **15**, R442–R443 (2005).
17. Limback-Stokin, K., Korzus, E., Nagaoka-Yasuda, R. & Mayford, M. Nuclear calcium/calmodulin regulates memory consolidation. *J. Neurosci.* **24**, 10858–10867 (2004).
18. Rescorla, R.A. Inhibition of delay in Pavlovian fear conditioning. *J. Comp. Physiol. Psychol.* **64**, 114–120 (1967).
19. Welzl, H., D'Adamo, P. & Lipp, H.P. Conditioned taste aversion as a learning and memory paradigm. *Behav. Brain Res.* **125**, 205–213 (2001).
20. Bahar, A., Samuel, A., Hazvi, S. & Dudai, Y. The amygdalar circuit that acquires taste aversion memory differs from the circuit that extinguishes it. *Eur. J. Neurosci.* **17**, 1527–1530 (2003).
21. Rosenblum, K., Meiri, N. & Dudai, Y. Taste memory: the role of protein synthesis in gustatory cortex. *Behav. Neural Biol.* **59**, 49–56 (1993).
22. Dodge, K.L. & Scott, J.D. Calcineurin anchoring and cell signaling. *Biochem. Biophys. Res. Commun.* **311**, 1111–1115 (2003).
23. Munton, R.P., Vizi, S. & Mansuy, I.M. The role of protein phosphatase 1 in the modulation of synaptic and structural plasticity. *FEBS Lett.* **567**, 121–128 (2004).
24. Fleischmann, A. *et al.* Impaired long-term memory and NR2A-type NMDA receptor-dependent synaptic plasticity in mice lacking c-Fos in the CNS. *J. Neurosci.* **23**, 9116–9122 (2003).
25. Jones, M.W. *et al.* A requirement for the immediate early gene *Zif268* in the expression of late LTP and long-term memories. *Nat. Neurosci.* **4**, 289–296 (2001).
26. Malkani, S., Wallace, K.J., Donley, M.P. & Rosen, J.B. An *egr-1* (*zif268*) antisense oligodeoxynucleotide infused into the amygdala disrupts fear conditioning. *Learn. Mem.* **11**, 617–624 (2004).
27. Malleret, G. *et al.* Inducible and reversible enhancement of learning, memory and long-term potentiation by genetic inhibition of calcineurin. *Cell* **104**, 675–686 (2001).
28. Mansuy, I.M. *et al.* Inducible and reversible gene expression with the rTA system for the study of memory. *Neuron* **21**, 257–265 (1998).
29. Michalon, A., Koshibu, K., Baumgartel, K., Spirig, D.H. & Mansuy, I.M. Inducible and neuron-specific gene expression in the adult mouse brain with the rTA2S-M2 system. *Genesis* **43**, 205–212 (2005).
30. Fanselow, M.S. Conditioned and unconditional components of post-shock freezing. *Pavlov. J. Biol. Sci.* **15**, 177–182 (1980).
31. Groth, R.D., Dunbar, R.L. & Mermelstein, P.G. Calcineurin regulation of neuronal plasticity. *Biochem. Biophys. Res. Commun.* **311**, 1159–1171 (2003).
32. Antoni, F.A. *et al.* Calcium control of adenylyl cyclase: the calcineurin connection. *Adv. Second Messenger Phosphoprotein Res.* **32**, 153–172 (1998).
33. Chan, G.C., Tonegawa, S. & Storm, D.R. Hippocampal neurons express a calcineurin-activated adenylyl cyclase. *J. Neurosci.* **25**, 9913–9918 (2005).
34. Ahi, J., Radulovic, J. & Spiess, J. The role of hippocampal signaling cascades in consolidation of fear memory. *Behav. Brain Res.* **149**, 17–31 (2004).
35. Sheng, M. & Kim, M.J. Postsynaptic signaling and plasticity mechanisms. *Science* **298**, 776–780 (2002).
36. Dash, P.K., Orsi, S.A. & Moore, A.N. Sequestration of serum response factor in the hippocampus impairs long-term spatial memory. *J. Neurochem.* **93**, 269–278 (2005).
37. Matheos, D.P., Kingsbury, T.J., Ahsan, U.S. & Cunningham, K.W. Tcn1p/Crz1p, a calcineurin-dependent transcription factor that differentially regulates gene expression in *Saccharomyces cerevisiae*. *Genes Dev.* **11**, 3445–3458 (1997).
38. Blaaser, F., Ho, N., Prywes, R. & Chatila, T.A. Ca²⁺-dependent gene expression mediated by MEF2 transcription factors. *J. Biol. Chem.* **275**, 197–209 (2000).
39. Shibasaki, F., Price, E.R., Milan, D. & McKeon, F. Role of kinases and the phosphatase calcineurin in the nuclear shuttling of transcription factor NF-AT4. *Nature* **382**, 370–373 (1996).
40. Liu, J.O. Endogenous protein inhibitors of calcineurin. *Biochem. Biophys. Res. Commun.* **311**, 1103–1109 (2003).
41. Wang, X., Culotta, V.C. & Klee, C.B. Superoxide dismutase protects calcineurin from inactivation. *Nature* **383**, 434–437 (1996).
42. Zeng, H. *et al.* Forebrain-specific calcineurin knockout selectively impairs bidirectional synaptic plasticity and working/episodic-like memory. *Cell* **107**, 617–629 (2001).
43. Zhuo, M. *et al.* A selective role of calcineurin *Az* in synaptic depotentiation in hippocampus. *Proc. Natl. Acad. Sci. USA* **96**, 4650–4655 (1999).
44. Cannich, A. *et al.* CB1 cannabinoid receptors modulate kinase and phosphatase activity during extinction of conditioned fear in mice. *Learn. Mem.* **11**, 625–632 (2004).
45. Lin, C.H. *et al.* Identification of calcineurin as a key signal in the extinction of fear memory. *J. Neurosci.* **23**, 1574–1579 (2003).
46. Lin, C.H., Yeh, S.H., Lu, H.Y. & Gean, P.W. The similarities and diversities of signal pathways leading to consolidation of conditioning and consolidation of extinction of fear memory. *J. Neurosci.* **23**, 8310–8317 (2003).
47. Cammarota, M., Bevilaqua, L.R., Kohler, C., Medina, J.H. & Izquierdo, I. Learning twice is different from learning once and from learning more. *Neuroscience* **132**, 273–279 (2005).
48. Runyan, J.D., Moore, A.N. & Dash, P.K. A role for prefrontal calcium-sensitive protein phosphatase and kinase activities in working memory. *Learn. Mem.* **12**, 103–110 (2005).
49. Munton, R.P. *et al.* Qualitative and quantitative analyses of protein phosphorylation in naive and stimulated mouse synaptosomal preparations. *Mol. Cell. Proteomics* **6**, 283–293 (2007).

